

TAPPING INTO HEALTH, WEALTH, AND FREEDOM  
ALINA FRANK, CERTIFIED EFT & MATRIX ENERGETICS PRACTITIONER



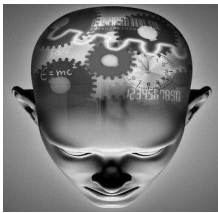
The \$ Archetypes Part V: The Caretaker



Do you define yourself as generous and compassionate? Do you find that people rely on you to save them, lend them money, or help them out? Does it seem that it isn't often reciprocated? Do you feel uneasy about all your giving? Do you believe that people can't make it without you or your assistance? Do you treat others better than you treat yourself? Would you feel uncomfortable if someone in your life (that you have been caretaking) suddenly stopped asking for help? Would you feel it as a loss? Do you have less than 6 months living expenses in savings due to your pattern of being too generous with friends, family, or charities? If these questions are sounding off alarm bells in your mind and body, then you probably have the Caretaker managing your money.

The Caretaker and tapping script continued here >

Why We Believe What We Believe



Just recently I worked with a client on her fear that her issue wasn't indeed cleared in our first session together. In spite of the fact that she's been receiving undeniable evidence that her physical issue is gone, her mind has yet to make that shift. This is a perfect example of cognitive biases that we engage in day in and day out. See if you recognize some of these in yourself.

[Complete Article here>](#)

**Energy Psychology in the News** I am continuing to add more research and studies to my website [here](#) Energy Medicine and Energy Psychology advocates were invited to speak in front of the House Committee on Veterans Affairs. You can read the summary of this historic visit in this [section](#)

Love Tap

What is an codependent bargain? How does this pattern show up in your relationships? Find out about how these dysfunctional beliefs were created in the first place with Inner Child therapist Cathryn Taylor on the next Love Tap 8/25/10 10am Pac [here](#).

Upcoming Events

Manifestation Wheel Teleclass begins 9/21 for 4 weeks. Tuition includes homework, handouts, and recordings. [More details](#)

Manifestation Wheel LIVE! 9/12 on Whidbey. We sold out last time so register early to hold your space. [More details](#)

September Portland Intensive EFT Level 1 and 2 CEUs offered. This is filling up fast so make sure to reserve your spot now [Click here](#)

[Canadian Tappers Gathering in British Columbia October 2nd](#) with chronic illness expert Annabel Fisher , Money Matrix creator Paul Zelizer, and my husband and I. Don't miss this opportunity for community guidance, support, and mastery. The following day Annabel and I will be launching our [Kick Start Your Practice](#). Registration is now open! Click on the links to hold your space.

[EFT Training on Whidbey this Fall - CEUs Offered](#)  
EFT Level 1 October 16th on Whidbey  
EFT Level 2 November 13-14th on Whidbey

IN THIS ISSUE

[Caretaker Archetype](#)

[Cognitive Biases](#)

[EFT in the News](#)

[Manifestation Wheel Teleclass and Live Workshops](#)

[Upcoming Newsletter More Archetypes](#)

[Using Maori Shaman Techniques](#)

[White Coat Syndrome](#)

[Upcoming Events](#)  
Now offering CEs to a whole range of professions including massage therapists, acupuncturists, and more!

[EFT Level 1 and 2 Portland September](#)

[Whidbey Island Level I and II in October and November](#)



Coming Soon on Love Tap Radio

[8/25/10 Inner Child Expert Cathryn Taylor on Codependent Bargains](#)

EFT LEVEL 2 NOVEMBER 15 11AM ON WINDSO,  
Repeat students receive 50% off

9/08/10  
Dr. Craig and I will be giving you a sneak preview of our teleclass on using the Manifestation Wheel and EFT

All shows can be listened to live or downloaded

To schedule a free 15 min consult [email me now](#)